

A woman with her hair styled in an updo, wearing a voluminous, flowing yellow dress with a large bow at the waist. The dress is made of a shiny, silk-like fabric that cascades around her. The background is a textured, warm-toned wall. The entire scene is framed by a thin white border.

FASHION SHOWCASE
INEFFABLE + SENIOR SHOWCASE

AUGUST 16, 2024

BY ROCKY MOUNTAIN COLLEGE OF ART + DESIGN

ROCKY MOUNTAIN COLLEGE OF ART + DESIGN
PRESENTS

FASHION SHOWCASE

INEFFABLE + SENIOR SHOWCASE

The RMCAD Fashion Design Program is excited to host its annual showcase where graduating seniors and students will display their talents and creative directions. This **FASHION SHOWCASE** expresses the uniqueness of each designer's creativity, storytelling, and passion behind their collections.

INEFFABLE FASHION SHOWCASE: INEFFABLE means something too great or extreme to be expressed or described in words or something that surpasses the ability of language to express it.

RmCAD

DESIGN BY JORDAN TRIGG ►
PHOTO BY OLIVIA STEINBRINK



DESIGNER LINE UP

INEFFABLE

FASHION SHOWCASE

ARIEAL
CELESTINE

AYLIN
MUNOZ

ANN
MOORMAN

ERIC
JENKINS

HUNTER
KEMP

KYLA
MARCUM

LAUREN
LOFY

DASHA
CHAVEZ

SENIOR

FASHION SHOWCASE

ZACHARY
MICK

SOFI-RIVERA
OSORIO

CLAUDIA
MORANTES

JORDAN
TRIGG

RACHEL
GAYNOR

JARED
SUAREZ

RATHA
MAO

COOPER
LAFFINS

RACHEL
NAYLOR

UP-AND-COMING STUDENT DESIGNERS

ARIEAL CELESTINE | @arieallynnore

“Ethereal Agony” is a collection that seeks to go beyond the boundaries of traditional design by digging into the complexities of human emotion. Through innovative use of fabric, symbolism, color, and silhouette, my collection will invite viewers to contemplate the ineffable nature of emotional pain and find solace in the transformative power of art and self-expression.

ANN MOORMAN | @annm24

Drawing inspiration from the concept of “ineffable” and my personal journey living with electro-sensitivity, I present two avant-garde fashion looks that encapsulate the indescribable essence of this experience.

My first ensemble, titled “Layers of Resilience,” features a foil corset highlighted by glow-sticks and a crinoline cage surrounded by neon lights concealed beneath layers of translucent fabric. Each layer symbolizes the multifaceted nature of electro-sensitivity, representing the complex layers of challenges and coping mechanisms inherent in navigating this condition.

In stark contrast, my second look, “Shielded Brilliance,” takes a bold approach to representing the defensive measures against electromagnetic fields (EMFs). A grand foil coat envelops the wearer, serving as a symbolic shield against the omnipresent electronic stimuli. The metallic sheen of the coat reflects not only the protective aspect of EMF defense but also the inner resilience required to confront and overcome the challenges posed by this condition.

Together, these creations offer a visual narrative of the ineffable experience of living with electro-sensitivity celebrating both the hidden layers of strength and the steadfast defense against indescribable invisible forces.

HUNTER KEMP | @hunter.lpk

On a street that shares my same name, the blue, purple, and green auroras dance gracefully across the winter night skies. One’s gaze follows the auroras down to the snow they pair with, then the eyes meet a man, frozen and gone. He lay there deceased, as the frigidity of the night traps his soul in time, frozen where his body lay. In an effort to grasp the words to explain how I felt at that time, I couldn’t. It was, and still is an Ineffable moment.

This ensemble represents the experience of him, and many more unfortunate souls. Choked and trapped, stiffened in time, by Alaska herself. Though his body was layered thick with fibers, he might as well have been wearing the snow. Nothing can protect you, when it’s 40 below.

◀ DESIGN BY FLOYD MORING
PHOTO BY JOSH BELT

INEFFABLE FASHION SHOWCASE

UP-AND-COMING STUDENT DESIGNERS

LAUREN LOFY | @lauren.lofy

With the concept of ineffable, my collection is about growing as a person and learning how to heal. Bettering oneself is a journey that never truly ends but people experience breakthroughs. I played with the ideas of resisting change, masking, and entrapment. My design recreates the desire to break free from the mental prison people put themselves in. The design utilizes strange imagery with a hopeful message. My collection is called Growing Pains because you have to challenge yourself in order to change. Mauve, maroons, gold, black, and cream colors are used to set a darker tone. Body horror and hands stretching from the fabric are used for my silhouette.

AYLIN MUNOZ | @aylin.markz

“Resonance of Palestine” is a contemporary Muslim wear collection that honors Palestinian identity and resilience. Featuring red satin, keffiyeh patterns, and red chiffon, each garment blends traditional symbolism with modern design. The collection’s rich colors and meticulous craftsmanship celebrate Palestinian heritage, while its elegant silhouettes and storytelling through fashion aim to inspire solidarity and appreciation for Palestine’s cultural depth and enduring spirit.

ERIC JENKINS | @unnecessary_customs

Using Ineffable as a theme and motivation, I kind of started to work backwards. I started to sketch and see what I could come up with. After a couple of weeks, I came up with a dress and a coat. After getting all the details of the coat figured out, it took me to the idea of a butterfly. Not just the beauty of a butterfly, but the transformation from a caterpillar to a butterfly. I wanted to showcase the “not so pretty” caterpillar in the coat, and the butterfly in the dress. The coat representing the caterpillar and its cocoon once it starts the process of pupation. A caterpillar will liquefy itself once in the cocoon, leaving only a few key structures for survival. As time goes by, it starts to rebuild itself, and out comes a butterfly, which is represented in the dress. I want the dress to be clean and neat compared to the jacket. This look is how I want to present the strange and ineffable process of a caterpillar to a butterfly.

KYLA MARCUM | @emomermaid.art

I have never been able to describe my style to others when I am asked what my style, in particular, looks like or takes after. I have also noticed that other people around me also have a hard time pinpointing with words what my style is. I think this is because I have always liked & been able to connect with a ton of different styles, so I want to keep this sort of fluid style throughout the designs I create. With that said, the designs I have made for this show reflect my own ineffable style. These designs can be perceived as edgy, elegant, girly, punk, androgynous, etc. depending on who is wearing & styling the pieces.

DASHA CHAVEZ | @dchavez7.7

Being stuck in your mind can be dangerous at times. It can lead to bundling up all the emotions and thoughts, which can lead to bipolar, DID, depression, anxiety, schizophrenia, etc. However, not knowing how to control them can make your life hell. The voices in your head will tell you to pick yourself, that it’s better to live alone, but others will say embrace your loved ones, they will understand your struggles. With those voices, your mind is being controlled 24/7 with no freedom like a puppet. Even if you choose your loved ones, you may feel like a burden telling them about your problems that don’t relate to them, which can lead to more negative thoughts and voices in your mind.

However, sometimes you’re unable to speak about what your struggles are because the anxiety of speaking is terrifying. From that aspect, Ineffable is where I’m connecting on not being able to talk about someone’s true feelings and thoughts when they’re going through bipolar, DID, depression, anxiety, schizophrenia, etc. You’ll never know when someone is locked in their mind until it’s too late.



SENIOR
FASHION SHOWCASE

SENIOR DESIGNERS



ZACHARY MICK

DESIGNER STATEMENT: @legereeee

This collection delves into the dichotomous realms of anxiety-induced entrapment and the liberating essence of artistic creation. Central to this exploration is the medium of dance, which holds profound significance in my life. While I felt immobilized by my overwhelming anxiety, the stage was a place for me to convey my unfiltered emotions. As the collection unfolds, it charts a transformative journey from constricted confinement to unfettered physical freedom. I seek to illuminate how a variety of emotional responses can manifest on the body, acting as a visual testament to the fight between inner turmoil and artistic transcendence.



CLAUDIA MORANTES

DESIGNER STATEMENT: @Iliosapparelandco

Prepare to immerse yourself in the universe of Ilios, where enchanting bohemian style seamlessly blends with an artistic touch while leaving a positive footprint on our planet. Ilios, a Greek word meaning 'sun,' overflows with inspiration from our oceans and nature to the fashion world. Blending consciousness, comfort, and individuality all in one, each garment piece is truly a canvas of creativity that portrays the harmony of fashion and nature. Refined from a color palette featuring rich browns reminiscent of our skin and sands, muted earthy tones, gold reflecting the sun, and pops of color symbolizing the vibrancy of life beneath our waves, every detail holds a symbolic meaning. Every piece of clothing is one of a kind, poised to embrace exclusivity and make bold statements that surpass transient fashion trends.



RACHEL GAYNOR

DESIGNER STATEMENT: @rooted.dreamz

The WEIGHT of Emotional Baggage Collection is inspired by the inability of the average person to stop and unload the baggage they carry with them in day-to-day life. Every one of us has invisible scars that weren't given the chance to heal properly, which affects how we move through the world and are viewed by our peers. I chose this as my senior thesis theme because after the pandemic, lugging around my baggage feels significantly more difficult than it used to, and expressing the pain helps it to feel lighter.



RATHA MAO

DESIGNER STATEMENT: @apsara.studios

My collection is a blend of two distinct themes. The first theme draws from my cultural background—I am Cambodian with a touch of Chinese heritage—I sought inspiration from traditional details and garments, incorporating them into this collection. The second theme is inspired by pop culture references that have shaped my upbringing, particularly from anime and video games. Growing up, I was captivated by the stylistic choices of female characters in these mediums. In particular, I draw inspiration from iconic motifs like bows, often seen in anime such as Sailor Moon and video games like Dead or Alive, translating them into elements within my collection. I seek to fuse these influences with my cultural roots, creating a unique synthesis that truly reflects my identity.



RACHEL NAYLOR

DESIGNER STATEMENT: @kiraskrazylaugh

Taking inspiration from pop idols in Japan and Korea, I wanted to bring the sweet and girlish designs to kaigai idols in the west. I found inspiration close to my heart, deciding to design personalized stage outfits for my own group "Colorful Halation." We have performed many times, but have never had designs of our own in our seven years together. Using fabrics in our members "image colors," my goal is to bring the joy of a rainbow to the runway. I chose this for my senior thesis because it feels like a love letter to the road that got me here, with all the hues of my past experiences, my prior selves, and all of my friends and supporters joining together. This collection truly feels like who I am and who I want to be - so everyone, "Let Your Colors Shine!"



SOFI-RIVERA OSORIO

DESIGNER STATEMENT: @sofiriveraosorio

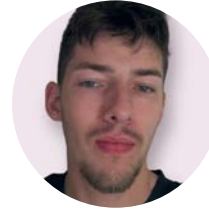
Euphoric is inspired by nature's beautiful vibrant mushrooms. The different silhouettes of the garments are based off of the vastly different shapes of all sorts of mushrooms. The bright colors are uncommon in nature but occur naturally in mushrooms which makes the collection fun and playful even though the collection is for fall/winter, where not a lot of colors are worn. This brings back the joy and playfulness to the cold months of the year.



JORDAN TRIGG

DESIGNER STATEMENT: @jordan.elise.design

My collection “SELF-OBSESSED” is a love letter to my past. Naturally, as humans, we become various versions of ourselves throughout our lives, especially in our adolescence. For all versions of myself in the past, I didn’t have the capacity to give myself the love I deserved. Grappling with anger, sadness, and regrets, I frequently dealt with the feeling of self-loathing. With the self-love and self-acceptance I can finally give, I hope to acknowledge all of the fragments of pain that have built the mosaic of who I am today. I want to decorate the dark parts of my life, the memories of my struggles, the girl who couldn’t love herself. Recontextualizing and reimagining that darkness is an exercise of self-love. I am drawing inspiration from past images of myself, my memories, my relationship throughout the years with clothing, and decorative items and accessories that bring me joy. Color and cutesiness will add a bright lens to my struggles, a lens I hope to use in the future with the residual self-judgment I still cope with. This collection makes nods to the Decora subculture fashion style, pop music, and the aesthetics of the 2000s that I grew up in. The title “SELF-OBSESSED” is a reference to the style of wordage on the kitschy graphic tees of the 2000s, but also a way of portraying self-love through my sassy, feminine aesthetics. I have often felt that I feel things too deeply and that I grapple with my emotions too much. I have come to realize that my turmoil is somehow beautiful. It is beautiful to have the capacity to feel, to love, to give, to cry, to promise. I hope to portray that beauty, in my own unconventional way, through my collection.



JARED SUAREZ

DESIGNER STATEMENT: @swezsopsycho

My collection is inspired by the rock and hip hop movements of the 1990s and early 2000s. Putting a modern twist on classic 1990’s/2000’s menswear styles inspires me. I selected this for my senior thesis because I thought it matched my ethos the best, and was a segment of design I could thrive in.



COOPER LAFFINS

DESIGNER STATEMENT: @cooperlaffins

This collection, Jackalope, is an examination of religious symbolism and a critique of its deceptive role in theology. I’m interested in stories of ordinary circumstances being twisted into something sacred — choosing to “see” god despite better reasoning. A jackalope is born into existence through belief. The design process involved reevaluating the role of a designer by subverting rigid menswear codes. Considering liturgical dress and corporate tailoring as canvases to cast metaphor onto. I decided to use the idea of wind as the “physical” medium for expressing this sense of unknowing, and representation of a holy presence rearing its head in our world. Aiming to create garments that emulate the relationship between wind and material. The air and the fabric are the primary components, the body of the wearer is secondary, a bystander. Freezing material in motion as if blown into the model. Ultimately, it’s my goal to practice restraint with this collection — balancing high concept with contemporary sensibilities. Always emphasizing pattern cutting, shape, and the ritual of design.

THANK YOU

TO EVERYONE WHO MADE THIS POSSIBLE

FASHION SHOWCASE COMMITTEE + MENTORS

Christiana Lazarine, Jade Johnson, Karin Soderholm,
Stephanie Carlo, + Shannon Major

VIRTUAL FASHION SHOW FILM PRODUCTION + EDITING

Gabriel Medina + Angelica Medina

SHOWCASE JUDGES

Brandi McMichael, Matilda Marginal, + Andy Richardson

LADYCAT + TATUM

Emcee

BUTLER RENTS

NXT MODELS

STACEY JAMES INSTITUTE

TRAVEL BARTENDERS

GREAT EVENTS COLORADO

RMCAD MARKETING

RMCAD IT STAFF

STUDENT FASHION SHOWCASE VOLUNTEERS

BRENT FITCH

RMCAD President

JESSICA ELLIOTT

Interim Provost + Dean of Academics

KEELY GARCIA

Executive Administrator

STEPHANIE CARLO

Interim Fashion Design Chair

JIM REIMAN

Photography + Graphic Design Chair

JOHN MELTON

Director of IT

STUDENT PHOTOGRAPHERS

2024 FASHION SHOWCASE SPONSORS



BUTTERFLY PAVILION



TICKETS ON SALE NOW!
Colorado's biggest night for conservation.
Presented by
LOCAL HIVE
EST. 1924

Saturday, September 28, 2024
6:00 – 10:00 p.m. • Omni Interlocken Hotel
ButterflyBallColorado.org



Butterfly Ball
Colorado
People. Planet. Promise.

Fashion design combines technical ability and aesthetic understanding with key business skills, state-of-the-industry technology, and consumer culture to turn your artistic vision into a wearable reality. In this program, you'll learn how to achieve a successful career in the fashion industry through courses that cover the history, tools, and techniques used by industry professionals. When you graduate from RMCAD with an innovative portfolio, you'll be ready to set trends and advance in your field.

FASHION FACULTY

STEPHANIE CARLO, MFA
INTERIM CHAIR
/ ASSISTANT PROFESSOR

SHANNON MAJOR, BS
DEPARTMENT HEAD
/ ASSISTANT PROFESSOR

CHRISTIANA LAZARINE, MFA
ASSISTANT PROFESSOR

JADE JOHNSON, MFA
AFFILIATE PROFESSOR

KARIN SODERHOLM, MFA
ADJUNCT FACULTY

KATHLIN ARGIRO, MPS
ADJUNCT FACULTY

SKYE BARKER MAA, MS
ADJUNCT FACULTY

AMANDA COOPER, BFA
ADJUNCT FACULTY

SARAH FAUSETT, BS
ADJUNCT FACULTY

GEETIKA GUPTA, MBA/BA
ADJUNCT FACULTY

CAITLIN MACLAUGHLIN, MS
ADJUNCT FACULTY

GABRIEL MEDINA, BS
ADJUNCT FACULTY

CARRIE MILLER, MF
ADJUNCT FACULTY

PRISCA MILLIANCE, MS
ADJUNCT FACULTY

ELLE POWELL, MFA
ADJUNCT FACULTY

KATE SCHMIDT, MS
ADJUNCT FACULTY

KATHY SOW, BFA
ADJUNCT FACULTY

HEATHER VERRAN, BFA
ADJUNCT FACULTY

IRMA VILLANUEVA, MS
ADJUNCT FACULTY

AFTER GRADUATION

Our alumni have the opportunity to launch exciting careers all across the fashion stage. Whether your interests lie in couture fashion, eco design, accessories, or another specialty, a degree in Fashion Design from RMCAD will help you set you apart and be prepared for the rigor and excitement of the fashion world.

WHAT WILL YOU STUDY?

RMCAD's curriculum will provide you with the versatile education needed to express your creativity through clothing and make waves in the fashion industry. In this program, you will learn:

- Essential skills like draping, pattern drafting, garment construction, and textile science
- The basics of product development, sales, and marketing to gain an understanding of consumer culture
- How to use industry technology and develop technical skills in the studio

CAREER OPPORTUNITIES

- Stylist
- Print Coordinator
- Textile Designer
- Technical Designer
- CAD Artist
- Graphic Fashion Designer
- Product Design
- Product Development
- Production Manager
- Design Assistant
- Fashion Designer
- Trend Analyst
- Pattern Maker

BECOME A TRENDSETTER

For more information visit rmcad.edu/fashiondesign
303.753.6046 | admissions@rmcad.edu

ABOUT RMCAD

Founded in 1963, Rocky Mountain College of Art + Design is an accredited institution of higher education that offers degree programs focused on the arts, design, education, technology, and business. RMCAD serves its students from a 23-acre campus in Lakewood, Colorado, but also virtually, as a leader in online education for more than a decade. RMCAD offers courses taught by practicing industry professionals; an intimate learning environment; multimedia-rich online classes; and a beautiful historic campus. The school strives to allow artists and designers to find their voice, discover their own paths, and thrive as professionals.



ROCKY
MOUNTAIN
COLLEGE OF
ART +
DESIGN

RmcaD

ROCKY MOUNTAIN COLLEGE OF ART + DESIGN
1600 Pierce Street | Lakewood, CO 80214
800.888.ARTS | rmcad.edu